

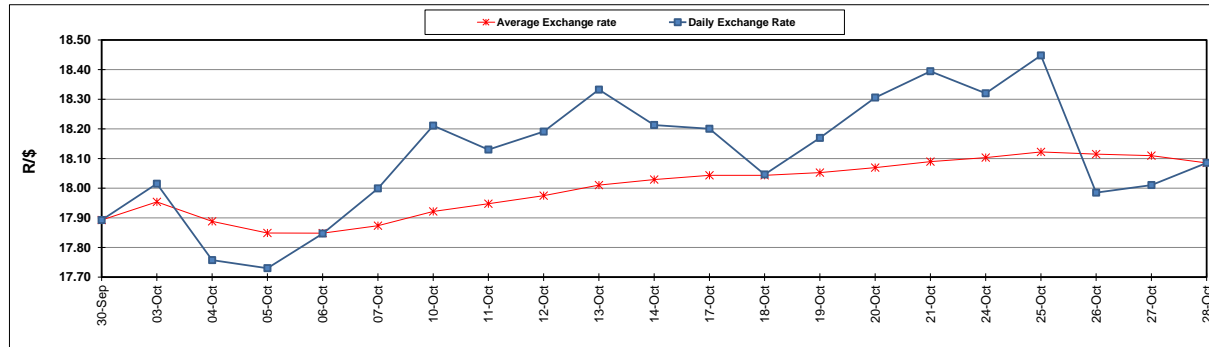
| | PETROL 95 ULP | PETROL 93 ULP & LRP | DIESEL 0.05% | DIESEL 0.005% | ILL. PAR. |
|--|------------------|------------------------|-----------------|------------------|-----------|
| GAUTENG PUMP PRICE (SA c/l) AS FROM 02/11/2022 | 2,287.000 | 2,257.000 | - | - | - |
| WHOLESALE PRICE (SA c/l) AS FROM 02/11/2022 | - | - | 2,548.960 | 2,574.360 | 1,776.288 |
| SINGLE NATIONAL MAXIMUM RETAIL PRICE | - | - | - | - | 2,343.000 |
| BASIC FUEL PRICE - 28/10/2022 (SA c/l) | 1,266.802 | 1,231.901 | 1,685.734 | 1,711.302 | 1,576.008 |
| PRESS RELEASE CONTRIBUTION TO BFP 28/10/2022 - 28/10/2022 (SA c/l) | 1,145.750 | 1,115.750 | 1,523.630 | 1,548.030 | 1,481.128 |
| UNIT OVER/(UNDER) RECOVERY - 28/10/2022 (SA c/l) | (121.052) | (116.151) | (162.104) | (163.272) | (94.880) |
| AVERAGE BASIC FUEL PRICE 28/10/2022 - 28/10/2022 | 1,266.802 | 1,231.901 | 1,685.734 | 1,711.302 | 1,576.008 |
| AVERAGE UNIT OVER/(UNDER) RECOVERY 28/10/2022 - 28/10/2022 | (121.052) | (116.151) | (162.104) | (163.272) | (94.880) |

ANALYSIS MOVEMENT OF AVERAGE OVER/(UNDER) RECOVERY

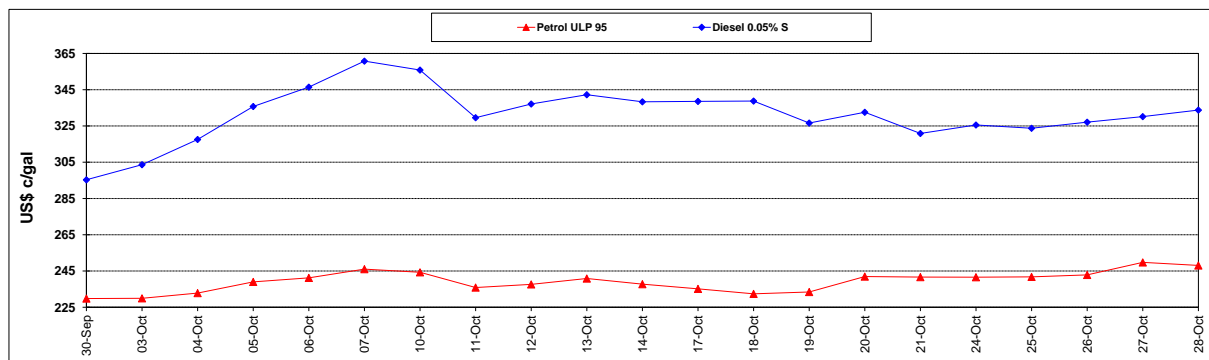
| | PETROL 95 | PETROL 93 | DIESEL 0.05% | DIESEL 0.005% | ILL. PAR. |
|--|-----------|-----------|--------------|---------------|-----------|
| - MOVEMENT IN INTERNATIONAL PRODUCT PRICES | (122.775) | (117.827) | (164.397) | (165.600) | (97.024) |
| - MOVEMENT IN EXCHANGE RATE | 1.723 | 1.676 | 2.293 | 2.328 | 2.144 |
| AVERAGE UNIT OVER/(UNDER) RECOVERY 28/10/2022 - 28/10/2022 | (121.052) | (116.151) | (162.104) | (163.272) | (94.880) |

R/\$ EXCHANGE RATE - (R/\$18.0853 - 28/10/2022)

EXCHANGE RATE USED IN BASIC FUEL PRICE



INTERNATIONAL PRODUCT PRICES OF BASKET USED IN BASIC FUEL PRICE



BASIC FUEL PRICE IN SA CENTS PER LITRE

